

CONTENTS

Letter from The Aerodyne Team	i
WARNING	ii
DISCLAIMER; LIMITATION OF WARRANTY ON PARACHUTE; LIMITATION OF REMEDIES; WAIVER AND RELEASE OF WARRANTIES	iii
CANOPY SELECTOR	v
1. TECHNICAL CHARACTERISTICS	1
1.1 INTRODUCTION	1
1.2 DESCRIPTION	1
1.3 TECHNICAL SPECIFICATIONS AND LIMITATIONS	2
2. ASSEMBLY AND OPERATING INSTRUCTIONS	3
2.1 INSPECTION BEFORE PACKING AND ASSEMBLY	3
2.2 INSTALLATION OF THE SOFT LINKS	4
2.3 PACKING THE SMART RESERVE	5
2.3.1 SETTING UP THE CANOPY	
2.3.2 PACKING THE CANOPY	
2.4 IN FLIGHT USE	18
3. MAINTENACE	19
3.1 MAINTENANCE PROCEDURES	19
3.2 FREQUENCY OF MAINTENANCE PROCEDURES	20
3.3 STORAGE	20

PRIOR TO ASSEMBLY, PACKING OR USE OF THIS PRODUCT, READ AND FULLY UNDERSTAND THE CONTENT AND ALL WARNINGS CONTAINED IN THIS MANUAL, AND CAREFULLY FOLLOW ALL INSTRUCTIONS BEFORE AND DURING PACKING AND WHEN USING THE PARACHUTE SYSTEM

What is Aerodyne all about? @
mantra for our company:

Better Gear, Better Value, Better Skydives

Better Gear

...it-all 7 cell, the) V
Triathlon. We created the Smart Reserve, known around the world for superior quality. We created the Pilot, arguably the best-opening performance canopy on the market. With the U -cross- braced elliptical canopy design to new performance highs. We developed a better cutaway system with the mini-force ring; even our hook knife outclasses the " as we develop innovative fabrics like zpX, as we bring out canopies like the Sensei and more A2 sizes, as we continue to improve an already outstanding Icon rig, we are following this mantra.

The second part is about providing *Better Value* . This is not necessarily about the lowest price, but about providing great value for money. We know our customers work hard and play hard and expect to get real value for the money they spend. Better products at comparable prices mean better value. Better customer service, provided by people who really know the

The final part is about *Better Skydives* . We are a company owned and staffed by skydivers. We get it! Skydiving is fun, and the better your jumps, the more fun you have. We support this by not only making the best gear and providing the best value we can, but by taking our product) - generally having fun. We ask that our sponsored teams and individuals do the same, putting

The Aerodyne Team

WARNING!

1. PROPER TRAINING AND/OR EXPERIENCE ARE REQUIRED TO LOWER THE RISK OF SERIOUS INJURY OR DEATH.

NEVER USE THIS PARACHUTE SYSTEM UNLESS YOU HAVE:

- A. READ THIS WARNING LABEL AND APPROPRIATE OWNERS MANUAL AND PACKING INSTRUCTIONS AND COMPLETED AT LEAST 100 RAM AIR PARACHUTE JUMPS.

OR

- B. READ THIS WARNING LABEL AND APPROPRIATE OWNERS MANUAL AND PACKING INSTRUCTIONS AND COMPLETED AT LEAST 100 RAM AIR PARACHUTE JUMPS.

2. LOWER THE RISK OF DEATH, SERIOUS INJURY, CANOPY DAMAGE AND HARD OPENINGS BY NEVER EXCEEDING THE MAXIMUM LIMITS:

MAXIMUM DEPLOYMENT SPEED: 150 KTS

MAXIMUM EXIT WEIGHT: ### Lbs.

(Jumper + Clothing + Equipment)

MODEL AND SIZE: ####

PART NUMBER: ####

SERIAL NUMBER: ####

DATE OF MANUFACTURE: ####

AVERAGE PEAK FORCE MEASURING ON STRENGTH TESTS: ####

APPROVED FOR USE WITH SINGLE HARNESS RESERVE PARACHUTE ASSEMBLIES EQUIPPED WITH A MAIN PARACHUTE RELEASE.

HARD OPENINGS CAN CAUSE EQUIPMENT DAMAGE, SEVERE INJURY OR DEATH. PARACHUTE SYSTEMS SOMETIMES FAIL TO FUNCTION PROPERLY EVEN WHEN CORRECTLY ASSEMBLED, PACKED AND OPERATED. YOU RISK SERIOUS INJURY OR DEATH EACH TIME YOU USE THIS OR ANY PARACHUTE SYSTEM! EACH TIME YOU USE THIS OR ANY PARACHUTE SYSTEM, BY DOING SO YOU WILL BE DEEMED TO HAVE EXPRESSLY AND IMPLIEDLY ASSUMED THIS RISK.

MANUFACTURED UNDER TSO C23d

AERODYNE RESEARCH LLC
 1405 Flight Line Blvd. Unit 20
 Deland, FL 32724-2192
 Tel: (813)891-6300 Fax: (813)891-6315

REMOVAL OF THIS LABEL IS PROHIBITED AND VOIDS THE TSO
 MADE IN SOUTH AFRICA

PRIOR TO ASSEMBLY, PACKING OR USE OF THIS PRODUCT, READ AND FULLY UNDERSTAND THE CONTENT AND ALL WARNINGS CONTAINED IN THIS MANUAL, AND CAREFULLY FOLLOW ALL INSTRUCTIONS BEFORE AND DURING PACKING AND WHEN USING THE PARACHUTE SYSTEM

SMART RESERVE PACKING MANUAL REVISED January 10

DISCLAIMER; LIMITATION OF WARRANTY ON PARACHUTE; LIMITATION OF REMEDIES;
WAIVER AND RELEASE OF WARRANTIES

BY ACCEPTING AND USING THIS PARACHUTE, OR BY ALLOWING OTHERS TO USE IT, YOU CONFIRM THAT YOU UNDERSTAND THAT BECAUSE OF THE UNAVOIDABLE DANGER ASSOCIATED WITH THE USE OF THIS PARACHUTE, THE MANUFACTURER MAKES NO WARRANTY WHATSOEVER, EXPRESS OR IMPLIED, ARISING BY LAW OR OTHERWISE, EXCEPT A WARRANTY THAT A PARACHUTE OF SIMILAR DESIGN HAS BEEN PREVIOUSLY USED FOR PARACHUTE JUMPING. THE PARACHUTE IS SOLD, CONVEYED, LOANED, GIFTED, OR OTHERWISE DELIVERED, FURNISHED OR PROVIDED TO YOU BY THE MANUFACTURER, OR ON ITS BEHALF, AS IS, WITH ALL FAULTS, AND WITHOUT ANY WARRANTY OF MERCHANTABILITY OR FITNESS FOR USE.

THE MANUFACTURER EXPRESSLY DISCLAIMS ANY LIABILITY UNDER THE LAW, IN TORT OR OTHERWISE, FOR DAMAGES, DIRECT OR CONSEQUENTIAL, INCLUDING BUT NOT LIMITED TO DAMAGES FOR PERSONAL INJURIES, WRONGFUL DEATH, PROPERTY DAMAGE AND LOSS OF USE OF THE PARACHUTE, RESULTING FROM ANY MALFUNCTION OF THE PARACHUTE, OR FROM ANY DEFECT IN DESIGN, MATERIAL, WORKMANSHIP OR MANUFACTURE OF THE PARACHUTE, WHETHER CAUSED BY NEGLIGENCE ON THE PART OF THE MANUFACTURER, AND/OR BY ANY AND ALL MANUFACTURERS OF ANY AND ALL PARTS, ACCESSORIES, COMPONENTS, OR APPLIANCES MADE A PART OF, OR APPURTENANT TO, THE PARACHUTE.

YOU, BY YOUR USE OF THE PARACHUTE, AND/OR BY ALLOWING IT TO BE USED BY OTHERS, SPECIFICALLY WAIVE ANY LIABILITY ON THE PART OF THE MANUFACTURER FOR PERSONAL INJURIES, WRONGFUL DEATH, LOSS OF CONSORTIUM, PROPERTY DAMAGE AND LOSS OF USE OF THE PARACHUTE. YOU AGREE, AND HAVE MATERIALLY REPRESENTED TO OF, AND EXPRESSLY ACCEPT, ANY AND ALL OF THE RISKS OF PHYSICAL INJURY, DEATH AND/OR PROPERTY DAMAGE WHICH MAY OCCUR AS A RESULT OF YOUR USE AND/OR MISUSE OF THE PARACHUTE DESIGNED BY, MANUFACTURED BY AND/OR RECEIVED FROM EXPRESSLY WAIVE ANY CLAIM YOU MIGHT OTHERWISE HAVE OF STRICT LIABILITY AGAINST THE MANUFACTURER.

THE WARRANTIES SET FORTH ABOVE, AND THE OBLIGATIONS AND LIABILITIES OF THE MANUFACTURER, AND YOUR REMEDIES THEREUNDER, ARE EXPRESSLY IN LIEU OF, AND YOU HEREBY WAIVE AND RELEASE THE MANUFACTURER FROM, ANY AND ALL OTHER WARRANTIES, AGREEMENTS, GUARANTEES, CONDITIONS, DUTIES, OBLIGATIONS, REMEDIES OR LIABILITIES, EXPRESS OR IMPLIED, ARISING BY LAW OR OTHERWISE, INCLUDING, WITHOUT LIMITATION, ANY WARRANTY OF MERCHANTABILITY AND FITNESS FOR PARTICULAR PURPOSE, AND IMPLIED WARRANTIES, INCLUDING BUT NOT LIMITED TO THOSE ARISING FROM COURSE OF PERFORMANCE, DEALING, USAGE OR TRADE, WITH RESPECT TO

PRIOR TO ASSEMBLY, PACKING OR USE OF THIS PRODUCT, READ AND FULLY UNDERSTAND THE CONTENT AND ALL WARNINGS CONTAINED IN THIS MANUAL, AND CAREFULLY FOLLOW ALL INSTRUCTIONS BEFORE AND DURING PACKING AND WHEN USING THE PARACHUTE SYSTEM

SMART RESERVE PACKING MANUAL REVISED January 10

MANUFACTURER SHALL NOT BE LIABLE FOR ANY DAMAGE OR LOSS (INCLUDING BUT NOT LIMITED TO CONSEQUENTIAL DAMAGES) SUFFERED BY YOU, DIRECTLY OR INDIRECTLY, BECAUSE OF ANY DEFECT IN THE PARACHUTE. NO AGREEMENT OR UNDERSTANDING BINDING ON THE MANUFACTURER, UNLESS IN WRITING AND SIGNED BY A DULY AUTHORIZED REPRESENTATIVE OF THE MANUFACTURER, AND BY YOU OR YOUR DULY AUTHORIZED REPRESENTATIVE.

IF YOU DECLINE TO WAIVE LIABILITY ON THE PART OF THE MANUFACTURER, OR IF YOU WARRANTY ON PARACHUTE; LIMITATION OF REMEDIES; WAIVER AND RELEASE OF THE PARACHUTE, BEFORE IT IS USED, TO THE MANUFACTURER, WITHIN 15 DAYS FROM THE DATE OF YOUR RECEIPT OF THE PARACHUTE, WITH A LETTER STATING WHY IT WAS RETURNED.

PRIOR TO ASSEMBLY, PACKING OR USE OF THIS PRODUCT, READ AND FULLY UNDERSTAND THE CONTENT AND ALL WARNINGS CONTAINED IN THIS MANUAL, AND CAREFULLY FOLLOW ALL INSTRUCTIONS BEFORE AND DURING PACKING AND WHEN USING THE PARACHUTE SYSTEM

Canopy Selector

This canopy selector program is designed as a non-exclusive guide to selecting a canopy. It is designed to be used to assist you in finding an appropriate model and size of Aerodyne canopy for your exit weight, experience level and expectations. Please remember that in no way can this selector replace professional expert advice that is based upon firsthand knowledge of your current experience, skill level and frame of reference.

Only training, experience, currency and a healthy body and mind can reduce (but not eliminate) the risk to you of danger, serious bodily injury, or death. Regardless of your time in the sport, never hesitate to consult other more experienced or knowledgeable individuals. They are often happy to help you make appropriate decisions. At Aerodyne we recommend that, for both your main and reserve canopies, you choose a canopy suitable for your experience level, which you can land safely at your normal drop

progressive flare.

Please note that this selector is based upon exit weight and International Standard Atmosphere (ISA) conditions. Exit weight is body weight + equipment + clothing. ISA conditions are at Mean Sea Level

U O O

#

degrades at higher altitudes and with higher temperatures.

greater degree of ellipticity and will likely exhibit the associated characteristics. Typically an elliptical canopy is more equally pressurized for better flight performance and exhibits better flare capability. Similarly the toggle pressure is usually lighter and the turn response is quicker. While these observations are not absolute, they are often typical of those exhibited by canopies with more elliptical planforms.

AERODYNE RESEARCH, LLC

SMART RESERVE PACKING MANUAL REVISED January 10

Aerodyne Canopy Selector						
Exit Weight= jumper + clothing + equipment						
Canopy Model	Pf	Size ft ²	Student/Novice Jumpers	Intermediate Jumpers	Advanced Jumpers	Maximum
Wing Loading lbs/ft ² à					1.8 LBS KG	2.0 LBS KG
Mamba	22.1	90	Not recommended	Not recommended	162 74	180 82
	22.1	96	Not recommended	Not recommended	173 79	192 87
	22.1	104	Not recommended	Not recommended	187 85	208 95
	22.1	111	Not recommended	Not recommended	200 91	222 101
	22.1	117	Not recommended	Not recommended	211 96	234 106
	22.1	124	Not recommended	Not recommended	223 101	248 113
	22.1	132	Not recommended	Not recommended	238 108	264 120
	22.1	140	Not recommended	Not recommended	252 115	280 127
22.1	150	Not recommended	Not recommended	264 120	300 136	
Wing Loading lbs/ft ² à					1.6 LBS KG	1.8 LBS KG
Vision	15.5	90	Not recommended	Not recommended	144 66	162 74
	15.5	96	Not recommended	Not recommended	154 70	173 79
	15.5	104	Not recommended	Not recommended	166 76	187 85
	15.5	111	Not recommended	Not recommended	178 81	200 91
	15.5	117	Not recommended	Not recommended	187 85	211 96
	15.5	124	Not recommended	Not recommended	198 90	223 101
	15.5	132	Not recommended	Not recommended	211 96	238 108
	15.5	140	Not recommended	Not recommended	224 102	252 115
	15.5	150	Not recommended	Not recommended	240 109	264 120
15.5	168	Not recommended	Not recommended	269 122	264 120	
Wing Loading lbs/ft ² à			0.9 LBS KG	1.1 LBS KG	1.3 LBS KG	1.6 LBS KG
Pilot	6.6	90	Not recommended	99 45	117 53	144 65
	6.6	96	Not recommended	105 47	125 57	153 69
	6.6	104	Not recommended	114 52	135 61	166 76
	6.6	111	Not recommended	122 55	144 66	177 80
	6.6	117	Not recommended	129 59	152 69	187 85
	6.6	124	Not recommended	136 62	161 73	198 90
	6.6	132	Not recommended	145 66	172 78	211 96
	6.6	140	Not recommended	154 70	182 83	224 102
	6.6	150	Not recommended	165 75	195 89	240 109
	6.6	168	Not recommended	185 84	218 99	269 122
	6.6	188	207 94	207 94	244 111	301 137
6.6	210	231 105	231 105	273 124	336 153	
Wing Loading lbs/ft ² à			0.9 LBS KG	1.1 LBS KG	1.3 LBS KG	1.6 LBS KG
Triathlon	0.0	99	Not recommended	109 50	129 59	158 72
	0.0	120	Not recommended	132 60	156 71	192 87
	0.0	135	Not recommended	149 68	176 80	216 98
	0.0	150	Not recommended	165 75	195 89	240 109
	0.0	160	Not recommended	176 80	208 95	256 116
	0.0	175	158 72	193 88	228 103	280 127
	0.0	190	171 78	209 95	247 112	300 136
	0.0	210	189 86	231 105	273 124	300 136
	0.0	220	198 90	242 110	286 130	300 136
	0.0	260	234 106	286 130	300 136	300 136
Wing Loading lbs/ft ² à			0.9 LBS KG	1.0 LBS KG	LBS KG	LBS KG
Solo	6.6	230	207 94	230 105	300 136	300 136
	6.6	250	225 102	250 114	300 136	300 136
	6.6	270	243 110	270 123	300 136	300 136

PRIOR TO ASSEMBLY, PACKING OR USE OF THIS PRODUCT, READ AND FULLY UNDERSTAND THE CONTENT AND ALL WARNINGS CONTAINED IN THIS MANUAL, AND CAREFULLY FOLLOW ALL INSTRUCTIONS BEFORE AND DURING PACKING AND WHEN USING THE PARACHUTE SYSTEM

SMART RESERVE PACKING MANUAL REVISED January 10

Aerodyne Canopy Selector						
Canopy Model	Pf	Size ft ²	Student/Novice Jumpers	Intermediate Jumpers	Advanced Jumpers	Maximum
Wing Loading lbs/ft ² Δ						1.2 LBS KG
A-2 Tandem	6.7	330	Not recommended	Not recommended		418 190
	6.7	350	Not recommended	Not recommended		440 200
	6.7	370	Not recommended	Not recommended		470 214
	6.7	389	Not recommended	Not recommended		500 227
Wing Loading lbs/ft ² Δ			1.0 LBS KG	1.0 LBS KG	1.3 LBS KG	LBS KG
SMART Reserve	0.0	99	Not recommended	99 45	129 59	220 100
	0.0	110	Not recommended	110 50	143 65	220 100
	0.0	120	Not recommended	120 55	156 71	220 100
	0.0	135	Not recommended	135 61	176 80	220 100
	0.0	150	Not recommended	150 68	195 89	264 120
	0.0	160	160 73	160 73	208 95	264 120
	0.0	175	175 80	175 80	228 103	264 120
	0.0	190	190 86	190 86	247 112	264 120
	0.0	220	220 100	220 100	264 120	264 120
	0.0	250	250 114	250 114	300 136	300 136

PRIOR TO ASSEMBLY, PACKING OR USE OF THIS PRODUCT, READ AND FULLY UNDERSTAND THE CONTENT AND ALL WARNINGS CONTAINED IN THIS MANUAL, AND CAREFULLY FOLLOW ALL INSTRUCTIONS BEFORE AND DURING PACKING AND WHEN USING THE PARACHUTE SYSTEM

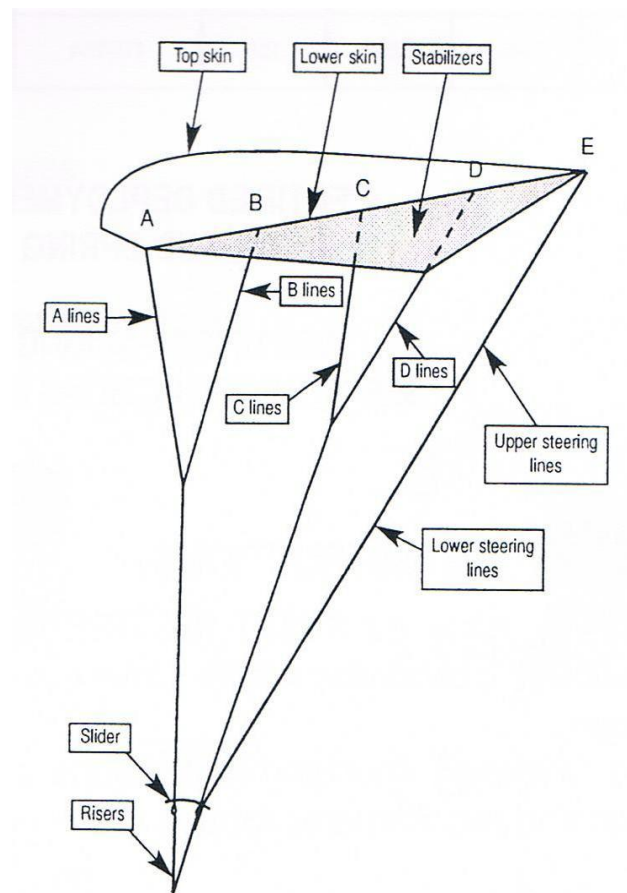
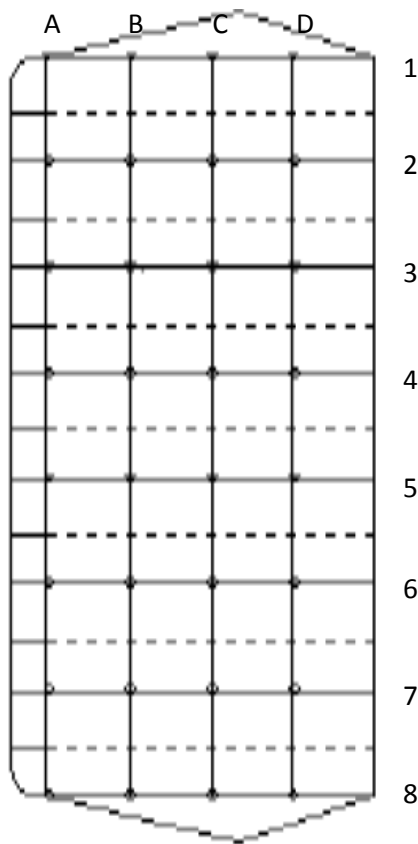
1 TECHNICAL CHARACTERISTICS

1.1 INTRODUCTION

THE SMART RESERVE MUST BE INSPECTED AND ASSEMBLED BY A QUALIFIED PARACHUTE RIGGER.

Before assembly, inspect the SMART RESERVE canopy, lines and links to ensure that the SMART RESERVE is compatible with the harness/container and deployment system with which it is to be used.

1.2 DESCRIPTION:



PRIOR TO ASSEMBLY, PACKING OR USE OF THIS PRODUCT, READ AND FULLY UNDERSTAND THE CONTENT AND ALL WARNINGS CONTAINED IN THIS MANUAL, AND CAREFULLY FOLLOW ALL INSTRUCTIONS BEFORE AND DURING PACKING AND WHEN USING THE PARACHUTE SYSTEM

1.3 TECHNICAL SPECIFICATIONS AND LIMITATIONS

P/N	CANOPY MODEL	SHIPPING WEIGHT	AREA	MAX SPEED	RECOMMENDED WEIGHT	MAX WEIGHT	SPAN LOWER SKIN	CHORD	ASPECT RATIO	VOLUME
		KG LB	SQ.FT	KTS	KG LB	KG LB	M FT	M FT		CU.IN
P1482-00	SMART 99	1.5 3.3	99	150	59 129	100 220	4.3/14.11	2.14/7.02	2	262
P1482-10	SMART 110	1.7 3.74	110	150	65 143	100 220	4.5/14.83	2.25/7.38	2	275
P1482-20	SMART 120	1.8 3.96	120	150	71 156	100 220	4.8/15.59	2.35/7.7	2	293
P1482-30	SMART 135	1.9 4.18	135	150	80 176	100 220	5.0/16.4	2.48/8.14	2	333
P1482-40	SMART 150	2.0 4.4	150	150	89 195	120 264	5.3/17.32	2.63/8.63	2	346
P1482-50	SMART 160	2.1 4.62	160	150	95 208	120 264	5.4/17.82	2.70/8.86	2	360
P1482-60	SMART 175	2.2 4.84	175	150	103 228	120 264	5.7/18.67	2.83/9.28	2	384
P1482-70	SMART 190	2.4 5.29	190	150	112 247	120 264	5.9/19.46	2.95/9.68	2	409
P1482-80	SMART 220	2.7 5.96	220	150	120 264	120 264	6.4/20.9	3.17/10.4	2	476
P1483-00	SMART 250	3.0 6.6	250	150	136 300	136 300	7.0/22.8	3.33/10.93	2	488

DEPLOYMENT SYSTEM:
FREE BAG AND SPRING PILOT CHUTE

PACKING METHOD:
SEE THE INSTRUCTIONS IN THIS MANUAL

PRIOR TO ASSEMBLY, PACKING OR USE OF THIS PRODUCT, READ AND FULLY UNDERSTAND THE CONTENT AND ALL WARNINGS CONTAINED IN THIS MANUAL, AND CAREFULLY FOLLOW ALL INSTRUCTIONS BEFORE AND DURING PACKING AND WHEN USING THE PARACHUTE SYSTEM

2 ASSEMBLY AND OPERATING INSTRUCTIONS

Before assembly, inspect the SMART RESERVE canopy, lines and links to ensure that the SMART RESERVE is compatible with the harness-container and deployment system with which it is to be used. Read and follow all assembly and operating instructions, and follow all manufacturer specifications, instructions and requirements for use of the parachute system.

2.1 INSPECTION BEFORE PACKING AND ASSEMBLY

1. Read and understand this manual and be qualified by proper instruction for sport parachuting activities.
2. Ensure that the SMART RESERVE size is compatible with the harness-container and deployment system with which it is to be used.
3. Prior to assembly and/or packing of the SMART RESERVE, a thorough inspection must be completed, including but not limited to inspection of the following:
 - Upper skin
 - Lower skin
 - External ribs
 - Internal ribs
 - All stitching on fabric and lines
 - Slider and grommets
 - Soft links/connector links
 - Reserve handle integrity and correct size fitted

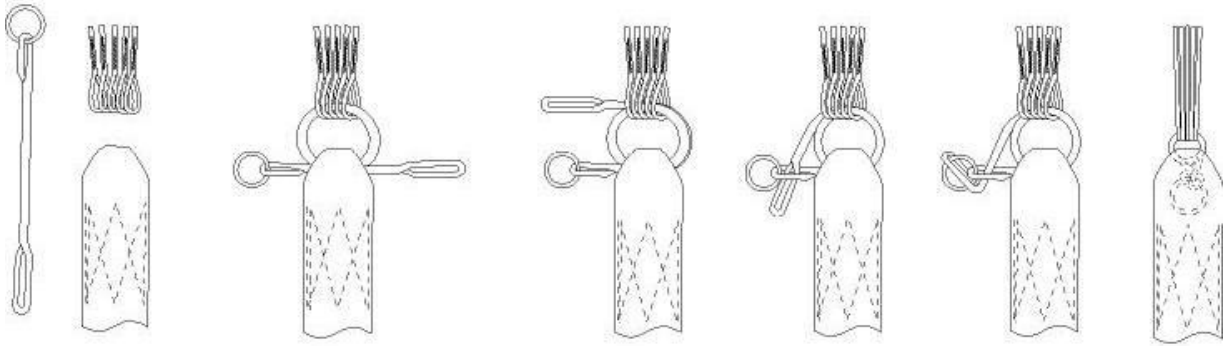
Take note of any worn, damaged, corroded or incorrectly rigged components, which must be repaired or replaced before the SMART RESERVE is packed for use.

2.2 INSTALLATION OF THE SOFT LINKS

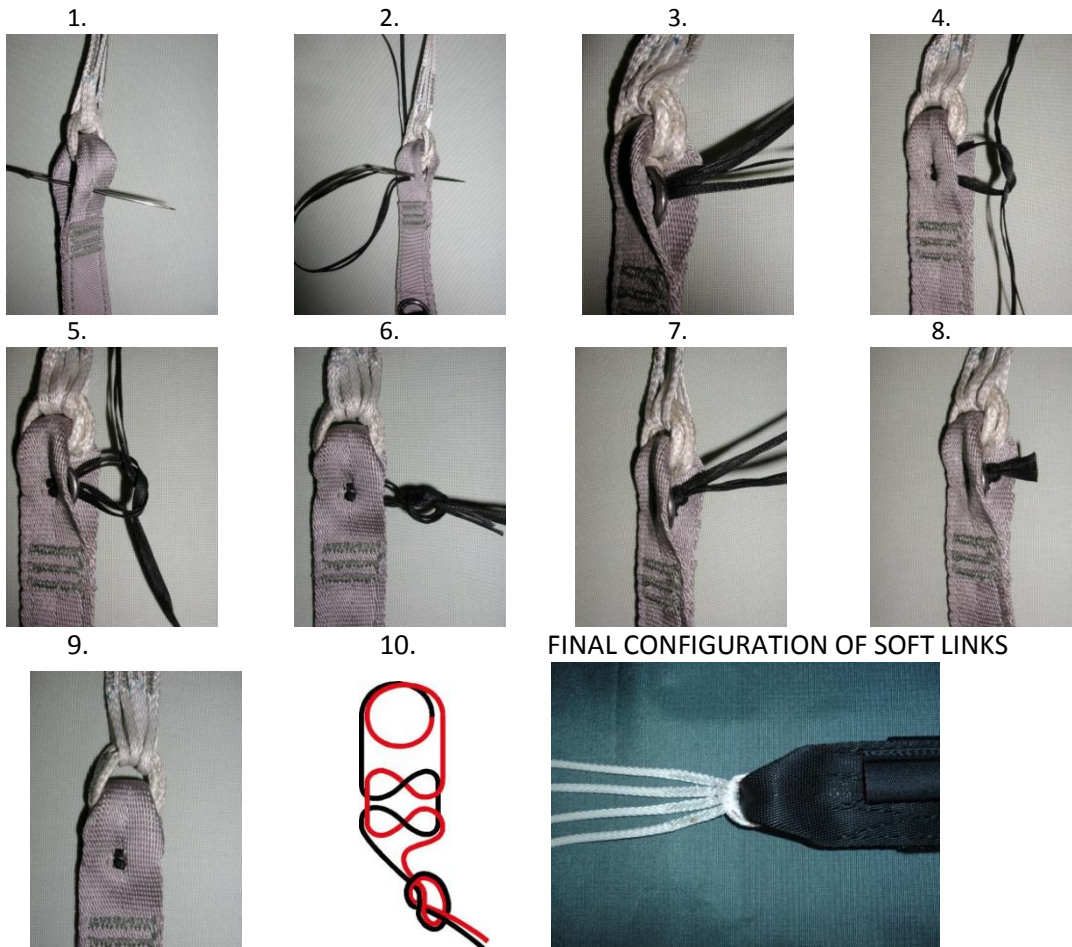
Soft Link type for individual reserve canopies

PN: P 1487-01

Installation Procedure on front and rear reserve risers:



Secure the Soft Link ring in the webbing pocket, and hand tack as shown.



FINAL CONFIGURATION OF SOFT LINKS

PRIOR TO ASSEMBLY, PACKING OR USE OF THIS PRODUCT, READ AND FULLY UNDERSTAND THE CONTENT AND ALL WARNINGS CONTAINED IN THIS MANUAL, AND CAREFULLY FOLLOW ALL INSTRUCTIONS BEFORE AND DURING PACKING AND WHEN USING THE PARACHUTE SYSTEM

2.3 PACKING THE SMART RESERVE

2.3.1 SETTING UP THE CANOPY

1. Lay the canopy harness out and attach the lines to their respective riser. Ensure proper line continuity and that the links are correctly installed. (Refer to section 2.2)
2. Check that the slider is correctly installed (tapes facing the canopy).
3. Clear the steering lines of any twists and route them through the appropriate grommets and guide rings on the rear risers.

CAUTION: The steering lines must pass directly from the trailing edge of the canopy through the slider grommet and the guide ring, without passing under or through any suspension lines.

4. A manual of the harness-Container system).
5. Re-check the whole assembly for line continuity and direction of flight i.e. canopy facing forward.
6. Carry out a thorough inspection before packing the reserve, especially if the reserve has been used.

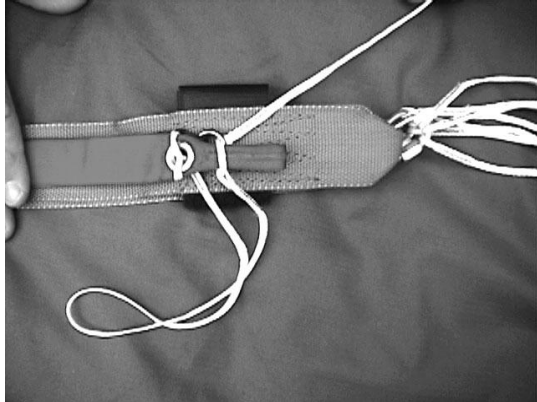
2.3.2 PACKING THE CANOPY

THE SMART RESERVE MUST ONLY BE PACKED BY A QUALIFIED PARACHUTE RIGGER AND IN

LAYING THE CANOPY OUT

After assembling and inspecting the SMART RESERVE and harness/container, lay the system out on a smooth, clean surface.

1. Set the brakes.



2. Close the line stow keepers



3. Take the line groups at the risers and walk up to the canopy.



PRIOR TO ASSEMBLY, PACKING OR USE OF THIS PRODUCT, READ AND FULLY UNDERSTAND THE CONTENT AND ALL WARNINGS CONTAINED IN THIS MANUAL, AND CAREFULLY FOLLOW ALL INSTRUCTIONS BEFORE AND DURING PACKING AND WHEN USING THE PARACHUTE SYSTEM

4. Suspend the canopy over the shoulder.



5. Count out 7 nose inlets.



6. Take all 7 nose inlets in your hand and grip them between your knees.



PRIOR TO ASSEMBLY, PACKING OR USE OF THIS PRODUCT, READ AND FULLY UNDERSTAND THE CONTENT AND ALL WARNINGS CONTAINED IN THIS MANUAL, AND CAREFULLY FOLLOW ALL INSTRUCTIONS BEFORE AND DURING PACKING AND WHEN USING THE PARACHUTE SYSTEM

7. Separate the canopy in the middle.



8. Separate line groups A & B.



9. And fold the fabric between A & B.



10. Separate line groups B & C.



PRIOR TO ASSEMBLY, PACKING OR USE OF THIS PRODUCT, READ AND FULLY UNDERSTAND THE CONTENT AND ALL WARNINGS CONTAINED IN THIS MANUAL, AND CAREFULLY FOLLOW ALL INSTRUCTIONS BEFORE AND DURING PACKING AND WHEN USING THE PARACHUTE SYSTEM

11. Fold the fabric between B and C and do the same between C and D.



12. Flake the stabilizer and flake the tail outwards.



PRIOR TO ASSEMBLY, PACKING OR USE OF THIS PRODUCT, READ AND FULLY UNDERSTAND THE CONTENT AND ALL WARNINGS CONTAINED IN THIS MANUAL, AND CAREFULLY FOLLOW ALL INSTRUCTIONS BEFORE AND DURING PACKING AND WHEN USING THE PARACHUTE SYSTEM

13. Make sure the tail is clear.



14. This is a view of canopy after flaking.



15. Flaking 3 nose inlets on each side.



16. Lay the canopy on the ground with the lines taugt. 17. Fold the right side nose inlet.

PRIOR TO ASSEMBLY, PACKING OR USE OF THIS PRODUCT, READ AND FULLY UNDERSTAND THE CONTENT AND ALL WARNINGS CONTAINED IN THIS MANUAL, AND CAREFULLY FOLLOW ALL INSTRUCTIONS BEFORE AND DURING PACKING AND WHEN USING THE PARACHUTE SYSTEM



18. Place the B lines on top of the A lines.



19. Fold stabilizer B to A.



PRIOR TO ASSEMBLY, PACKING OR USE OF THIS PRODUCT, READ AND FULLY UNDERSTAND THE CONTENT AND ALL WARNINGS CONTAINED IN THIS MANUAL, AND CAREFULLY FOLLOW ALL INSTRUCTIONS BEFORE AND DURING PACKING AND WHEN USING THE PARACHUTE SYSTEM

20. Place C lines on top of B lines.



21. Fold stabilizer C to B.



22. Place D lines on top of C lines.



23. Flake the stabilizer outwards.



PRIOR TO ASSEMBLY, PACKING OR USE OF THIS PRODUCT, READ AND FULLY UNDERSTAND THE CONTENT AND ALL WARNINGS CONTAINED IN THIS MANUAL, AND CAREFULLY FOLLOW ALL INSTRUCTIONS BEFORE AND DURING PACKING AND WHEN USING THE PARACHUTE SYSTEM

24. Flake the tail.



25. Align the center panel.



26. Repeat same operation for the left side of the canopy. Place the slider against the slider stops.
WARNING: IF THE SLIDER IS NOT AGAINST THE SLIDER STOPS, THE POSSIBILITY OF A HARD OPENING AND OF SERIOUS INJURY OF DEATH IS SIGNIFICANTLY INCREASED.



PRIOR TO ASSEMBLY, PACKING OR USE OF THIS PRODUCT, READ AND FULLY UNDERSTAND THE CONTENT AND ALL WARNINGS CONTAINED IN THIS MANUAL, AND CAREFULLY FOLLOW ALL INSTRUCTIONS BEFORE AND DURING PACKING AND WHEN USING THE PARACHUTE SYSTEM

27. Fold the stabilizers. Pull the center of the tail down to cover the slider grommets.



PRIOR TO ASSEMBLY, PACKING OR USE OF THIS PRODUCT, READ AND FULLY UNDERSTAND THE CONTENT AND ALL WARNINGS CONTAINED IN THIS MANUAL, AND CAREFULLY FOLLOW ALL INSTRUCTIONS BEFORE AND DURING PACKING AND WHEN USING THE PARACHUTE SYSTEM

28. Dress the canopy to the width of the D-bag. S-fold the nose under each side.



29. S-fold the tail and slider ensuring that the slider does not move. Hold this S-fold with your knees.



PRIOR TO ASSEMBLY, PACKING OR USE OF THIS PRODUCT, READ AND FULLY UNDERSTAND THE CONTENT AND ALL WARNINGS CONTAINED IN THIS MANUAL, AND CAREFULLY FOLLOW ALL INSTRUCTIONS BEFORE AND DURING PACKING AND WHEN USING THE PARACHUTE SYSTEM

30. Make the second S-fold and hold with your knees.



31. Pull out the center cell.



32. o



33. Roll the center as shown.



34.)



35. The canopy is now ready to be inserted into the D-bag. Slide the D-bag over the canopy.

PRIOR TO ASSEMBLY, PACKING OR USE OF THIS PRODUCT, READ AND FULLY UNDERSTAND THE CONTENT AND ALL WARNINGS CONTAINED IN THIS MANUAL, AND CAREFULLY FOLLOW ALL INSTRUCTIONS BEFORE AND DURING PACKING AND WHEN USING THE PARACHUTE SYSTEM



36. View of canopy in D-bag.



Close the reserve D-bag. At this stage of reserve packing, read and follow the specific instructions in the manual for your specific harness-container.

2.4 IN FLIGHT USE

Should you encounter a line twist after canopy deployment, do not release the brakes until you have cleared the twist.

After the opening, be ready to steer the canopy away from the other traffic, either with the rear risers or the steering toggles. Once clear from traffic, check your canopy and your position relative to the landing area. Prepare for landing by following a trajectory that allows you to set up at an altitude sufficient for a final approach and landing facing the wind. Remember that your SMART RESERVE will likely not glide as far as your main canopy.

When landing, flare the canopy symmetrically in such a way that maximum lift is achieved at the moment of touchdown. This will also reduce forward speed. CAUTION: TOGGLE DEFLECTION TO THE STALL POINT MAY BE LESS THAN THAT REQUIRED FOR YOUR MAIN CANOPY. BE CAREFULL NOT TO STALL THE CANOPY DURING THE LANDING FLARE.

Do not turn low to the ground! Turns increase both vertical and forward speed. Without sufficient altitude your canopy will not be able to recover from the turn before landing. Please remember it is more important to maintain a stable flight and make a proper landing flare, than to face the wind. When you are not absolutely sure that sufficient altitude remains to turn into the wind, continue to fly the canopy on its present heading, and execute a good flare.

DANGER!
DO NOT MAKE A TURN CLOSE TO THE GROUND

3 MAINTENANCE

REPAIRS TO THE SMART RESERVE MUST BE MADE EITHER BY THE MAUFACTURER OR BY A QUALIFIED PARACHUTE RIGGER, AND IN COMPLIANCE WITH ALL APPLICABLE LAWS.

3.1 MAINTENANCE PROCEDURES:

Important points to note during the inspection are:

1. Visually inspect the canopy for defects or damage to the fabric, tapes and seams. Any holes or tears must be patched with an overlay or standard sew-in patch. No ripstop tape patches are allowed. Any damage that requires the replacement of an entire panel or cell must be done by the manufacturer.
2. Check that all slider stops are present, intact and secure. There are four slider stops, one on each of the outer B and C line groups.
3. Check that all line attachment tapes are secure (Bartack present).
4. Check suspension and steering lines continuity, and ensure that all connections and finger traps have been stitched. Lines that are worn or have broken strands must be replaced.
5. Inspect the connector links for serviceability, and check that they have been correctly tightened, or in case of soft links, verify their integrity.
6. Check the slider for correct installation; the reinforcing tape must be facing the canopy. Inspect the inner surface of the grommets for nicks and sharp edges. Inspect the fabric for wear and tear.
7. y
which the SMART RESERVE is to be packed. Check all stitching for completion. Inspect hardware for damage and corrosion (rust may be removed with a lightly oiled rag).
8. Inspect the pilot chute, bridle and deployment bag.
9. The ripcord cable must not be frayed or kinked. Inspect the pin and swages for security.
10. u
the identification panel, must be recorded on the packing data card.

11. POROSITY: Check porosity in the following cases

- After 10 uses
- After immersion in water once the canopy is dry
- After 20 repacks (based on a 6month repack cycle)
- After any use in abnormal conditions

To make packing your SMART RESERVE easier, to prolong the life of the canopy and to prevent damage during packing, please observe the following instructions:

- A- Pack where the wind cannot affect your packing of the SMART RESERVE.
- B- Do not pack on concrete or asphalt. Pack your SMART RESERVE on a dry lawn or on a packing mat, thereby minimizing the wear on the lines, links and fabric.
- C- Inspect your SMART RESERVE prior to packing. Look for any damage, wear and tear. Ensure that the lines have no twists, tangles or turns.

3.2 FREQUENCY OF MAINTENANCE PROCEDURES

Verify local regulations on reserve canopy maintenance. If none are available, follow these recommendations. Service the reserve canopy at 1 year intervals in normal conditions of use and storage. If the conditions are different, the time between maintenance operations may be reduced by the user.

3.3 STORAGE

Textile and other materials used in the construction of all parachutes are sensitive to environmental elements. The parachute must be stored in a room where the temperature is kept between 15 degrees Celsius (59 °F) and 30 degrees Celsius (86 °F), and where the humidity is kept between 15% and 70%.

Further, the parachute must be protected from:

- Sunlight
- Temperatures of 93°C (200 °F) and above
- Acid and corrosive agents (e.g. car battery electrolyte)
- Rodents and pests
- Chlorine
- Smoke

When not in use, the equipment should be stored in its carry bag.

